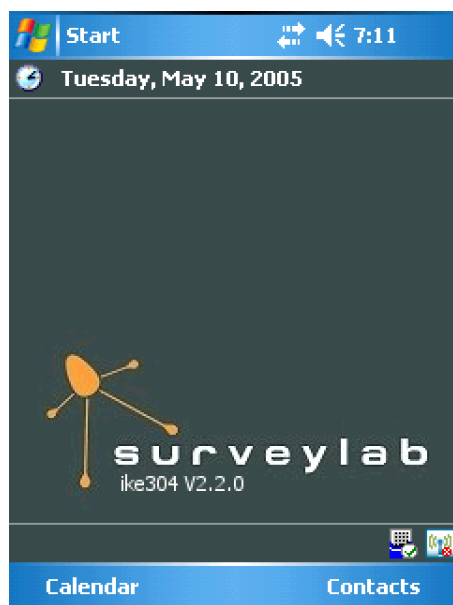


Upgrading your ike software

Surveylab is dedicated to continuing development and enhancement of the ike range. The present document describes how to check your software version, where to check to see if there is a more recent version available, and how to upgrade your unit to the latest software.

1 How to check your software version

The software version can be located on the today screen below the Surveylab logo. An example of the software version would be ike v2.2.0. If the Surveylab logo is not visible on the Today screen, then you need to reinstall ikeOS. An example of the today screen can be found below.



The current software version requires the internal HP iPAQ to have the correct ROM version installed. To verify this, soft reset ike by inserting the stylus into the RESET hole at the base. While ike resets ensure that the number in the bottom right hand corner of the screen is 1.00.00.H ENG. If your ike does not have the correct ROM version, please contact Surveylab support.

To check if service pack SP32878 is installed on your ike tap Start -> Settings -> HP Protect-Tools-> Help -> About. If the version number is 2.0.0.2255 then service pack SP32878 has not been installed. If the version number is 2.1.0.2659 then the service pack has been installed.

2 Where to get the latest software

The latest version of the software can be located on the Surveylab website at: http://www.survey-lab.com/downloads_software.htm

3 Installation selection of AP6.0.3 or AP7.0.1

ArcPad is a proprietary software mapping application by ESRI . During the installation process of the ike software, the option to install either ArcPad 6 or ArcPad 7 will be presented. After selecting the required ArcPad version, the installation process will continue as normal regardless of what version of ArcPad was selected.

4 Basic installation process

4.1 Pre-Installation

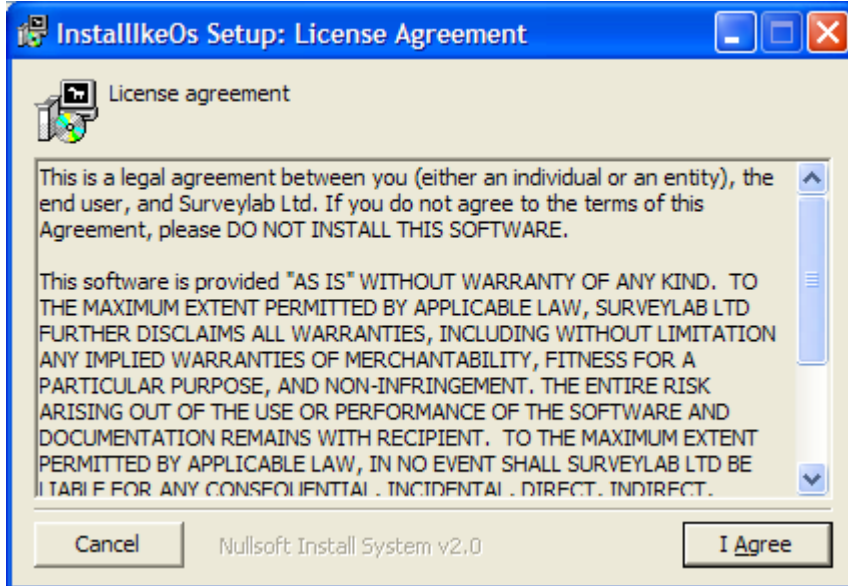
Before installing ikeOS:

- Clean Reset the ike device either manually or by using the Zeroise utility:
 - Consult the user manual provided for more detailed instructions on how to do this.
- Ensure you are using the correct ROM version (see the user manual).
- Work through the alignment and set up screens
- Dismiss the message boxes that appear on screen
- Ensure that ike is connected via ActiveSync.

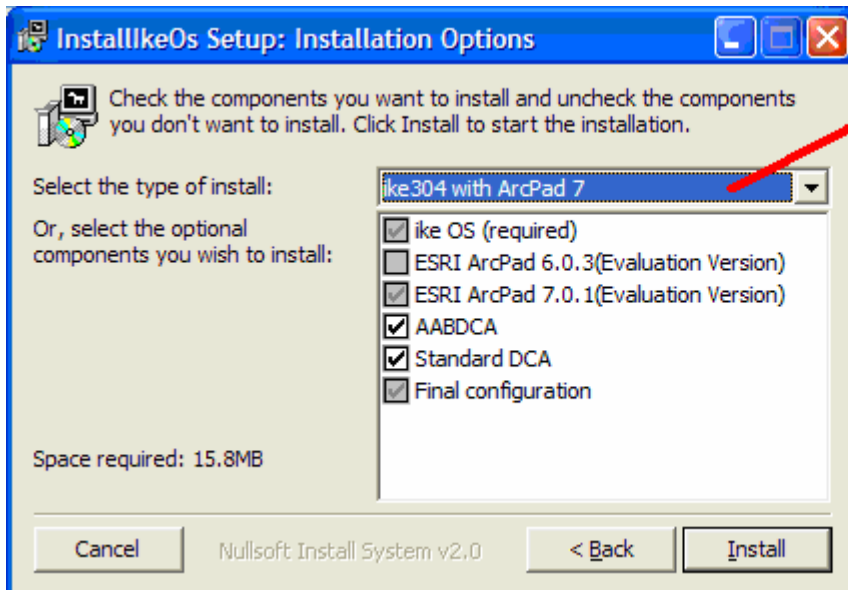
4.2 Installation

Insert the ike Software CD, and use Windows Explorer to browse to the folder \InstallFiles. Execute the file InstallikeOsXYZ.exe (where XYZ corresponds to the software Version number; for example InstallikeOs201.exe for version 2.0.1 of the ike software).

A splash screen will be displayed while the installation application loads, and then the following license agreement will be displayed.



Review the terms in the license agreement, and click "I Agree" if you agree with these terms

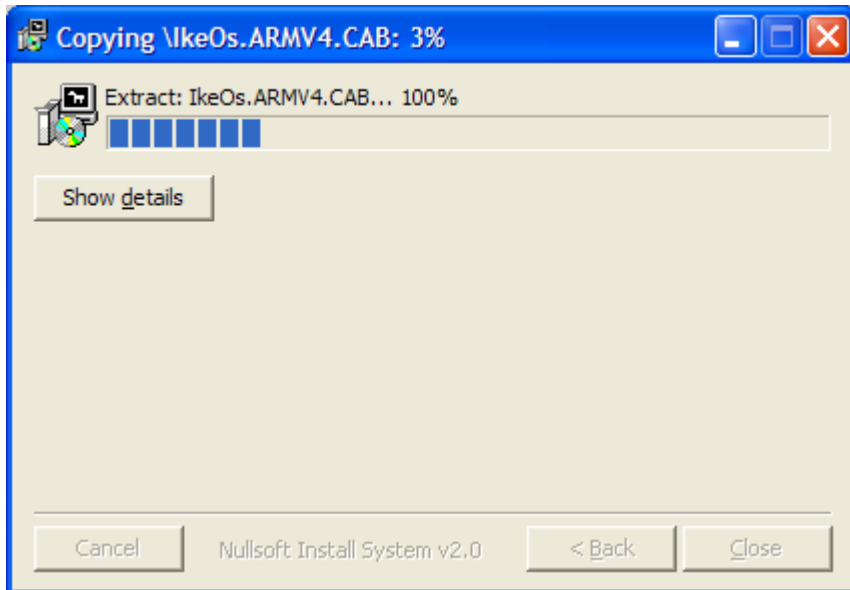


Select AP6 or AP7 here

Select the required options from the Installation Options Screen. Using the default options is recommended.

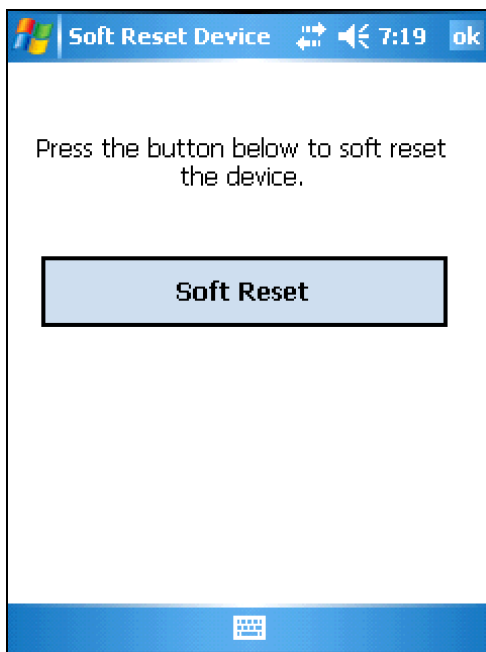
To use ike with ArcPad6, select "ike with ArcPad 6" from the "type of install" dropdown.

Click Install to proceed.



A progress dialog will be displayed as follows.

Click Close to terminate the application once the installation is complete.



A Soft Reset is required to complete the installation. Tap Soft Reset on the ike to complete the installation

4.3 Post Installation

After installing the new OS do forget to:

- Update the date/time settings.
- If you are using the Standard DCA, update the Magnetic Declination value for your area.

5 References

Please refer to the ike user manual for a detailed explanation on the installation process for the ike software. The ike user manual can be located in the downloads section at <http://www.survey-lab.com>

6 For support contact...

If you require assistance please contact our support department via support@survey-lab.com